

BR-102 plus Long-Term Blood Pressure Recorder

The discreet small-size BP monitoring unit

Maximum comfort for your patients!

The SCHILLER BR-102 plus gives the highest degree of patient comfort. It is distinguished by its small dimensions and low weight. Incorporating a special technique, the cuff is only inflated as much as needed. This is why the BR-102 plus can barely be seen, felt, or heard during use. It is discreet and reliable. With the BR-102 plus, your patient can continue his everyday life undisturbed - the more naturally a patient acts, the more reliable the measured values are.

Blood pressure solutions for every physician

The BR-102 plus can be used in angiology, internal medicine, cardiology, and also general medicine (family doctors).

One device – several fields of use:

- Screening (detection of patients with hypertension)
- Treatment control (e.g. assessment of the efficacy of prescribed drugs)
- Monitoring

Big possibilities in a small format!

- You have the choice between two versions:
 - Measurements are made using both the auscultatoric and the oscillometric methods, where the oscillometric measurement is used as backup to ensure accurate results for every measurement. The auscultatoric method of measurement also enables reliable measurements with patients suffering from cardiac arrhythmia or atrial fibrillation.
 - Purely oscillometric method – enables reliable blood pressure measurement without a microphone.
- Recording over 24 or 48 hours
- Easy menu guidance with two control buttons
- Voice recording of patient data
- Examination of adults and children thanks to a special algorithm
- Free programming and storage of up to four individual measurement programs
- The patient can take additional measurements at any time
- Recording and storage of up to 200 measurements in a 24h period
- USB interface for data transmission to a PC



SCHILLER analysis

software MT-300 Light (standard):

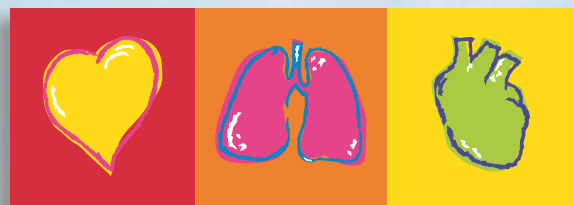
- All unit settings can be defined via the PC software
- When the BR-102 plus is started via the PC software, the patient data is stored in the unit
- Comprehensive statistical calculations based on the measurements
- The results are saved in XML format
- Various numerical and graphical presentations
- Printout
- Patient diary with automatically entered patient data
- Classification of the blood pressure values according to the definition of the "British Hypertension Society guidelines for hypertension management 2004 (BHS-IV)"

SCHILLER analysis software

MT-300 (optional):

In addition to the MT-300 Light features, this software has the following:

- Integration with the SCHILLER data management system SEMA-200
- E-mail transmission
- EMR system interface (GDT)
- PDF generation
- Serial comparison of different recordings
- Assignments editable



SCHILLER

www.schiller.ch

The Art of Diagnostics

Technical data BR-102 plus:

System:

Dimensions: 101 x 69 x 28 mm (l x w x h)
Weight: 198 g (including rechargeable batteries)
Power supply: 2 rechargeable NiMH batteries (\geq 2300 mAh), Type "AA"
LCD: Backlit graphical LCD with multi-language menu
Interface: USB interface for data transfer and settings
Programming: Menu guidance; 2 buttons
Safety Standards: IEC/EN 60601-1; UL 60601-1; C22.2 No. 601.1-M90; IEC/EN 60601-1-2 (EMC)
Protection Class: Internal power supply
Applied Part: BF according IEC/EN 60601-1
Conformity: CE 0123 according Directive 93/42/EEC (Medical Devices)
Classification: IIa according Directive 93/42/EEC

Measurement:

Methods of measurement: Auscultatoric (Korotkoff/Riva-Rocci) and oscillometric
Measurement duration: 24 h or 48 h
Measuring range, blood pressure: 30 – 300 mmHg
Measuring range, heart rate: 25 – 300 bpm
Deflation rate: 2 – 9 mmHg/sec., automatic
Measurement intervals: 10 – 120 min.
Memory capacity: Over 400 measurements and 30 sec. of voice recording
Option: Mini SD card for the additional storage of the raw data

Standard accessories:

Cuff (M), 4 NiMH rechargeable batteries, battery charger, securing pouch with belt, user guide, velcro fixing pads to secure cuff, adhesive pads to fix the microphone, MT-300 Light analysis software and USB cable assembly

Optional accessories:

Several cuff sizes

Analysis software (option):

- PC program MT-300:
- EMR system interface (GDT)
 - SEMA-200 connectivity
 - PDF generation
 - E-mail
 - Assignments editable
 - Serial comparison

PC requirements:

- WINDOWS™ 2000/XP
- Pentium 500 MHz or higher
- 1 GB hard disk
- The software needs 10 MB free hard disk memory
- 256 MB RAM
- Monitor resolution: XGA 1024 x 768 or higher

Technical Data and Images are subject to change without notice.

Asia

SCHILLER Asia-Pacific
10 C, Jalan SS 3/33
Taman Universiti
47300 Petaling Jaya
Selangor, Malaysia
Phone +603 78 77 5336
Fax +603 78 77 5744
sales@schiller.com.my

Austria

SCHILLER Handelsgesellschaft mbH
Kampmüllerweg 24
A-4040 Linz
Phone +43 732 70 99-0
Fax +43 732 757 000
sales@schiller.at

C.I.S. & Russia

SCHILLER AG
Moscow Representative Office
Office 414, 1-st Yamskogo Polya 15
125124 Moscow, Russia
Phone/Fax
+7 (095) 970 11 33,
+7 (095) 956 29 10
mail@schiller-ag.com
www.schiller-cis.com

France

SCHILLER Médical S.A.S.
4, rue Louis Pasteur
F-67162 Wissembourg/Cedex
Phone +33 3 88 63 36 00
Fax +33 3 88 94 12 82
info@schiller.fr

Germany

SCHILLER Medizintechnik GmbH
Rudolf-Diesel-Strasse 14
D-85521 Ottobrunn
Phone +49 89 62 99 81-0
Fax +49 89 609 50 90
info@schillermed.de

India

SCHILLER Healthcare India Pvt. Ltd.
D.C. Silk Mills Compound, 'A' Wing, 1st floor
5, Chunawala Estate, Kondivitta Lane
Andheri-Kurla Road, Andheri (E)
Mumbai - 400 059, India
Phone +91 22 826 35 20
Fax +91 22 826 35 25
schiller@vsnl.com

Japan

SCHILLER Japan, Ltd.
Biomedical Research Building 218
1-2-3 Kasumi, Minami-ku
Hiroshima 734-8551
Phone +81 82 250 2055
Fax +81 82 253 1713
koji.maekawa@schiller.jp
www.schiller.jp

Spain

SCHILLER ESPAÑA, S.A.
Avenida Baviera, 12 - 14 Posterior
E-28028 Madrid
Phone +34 91 713 01 76
Fax +34 91 355 79 33
schiller@schiller-es.com

Switzerland

SCHILLER-Reomed AG
Riedstrasse 14
CH-8953 Dietikon
Phone +41 1 744 30 00
Fax +41 1 740 37 10
sales@schiller-reomed.ch

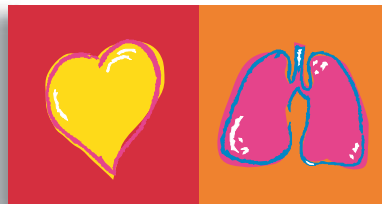
Turkey

SCHILLER TÜRKİYE
Halil Rifat Paşa Mah.
Darülaceze Cadd.
Perpa Ticaret Merkezi
B/Blok No: 41 K: 2
Okmeydanı-Sisli - İstanbul
Phone +90 212 210 8681 (pbx)
Fax +90 212 210 8684
sales@schiller-turkiye.com

USA

SCHILLER America Inc.
11300 NW 41st Street
Miami, Florida 33178
Phone +1 786 845 06 20
Fax +1 786 845 06 02
sales@schilleramerica.com

Your specialist:



The Art of Diagnostics

SCHILLER

w w w . s c h i l l e r . c h

Headquarters: SCHILLER AG, Altgasse 68, CH-6341 Baar, Switzerland, Tel. +41 41 766 42 42, Fax +41 41 761 08 80, sales@schiller.ch

